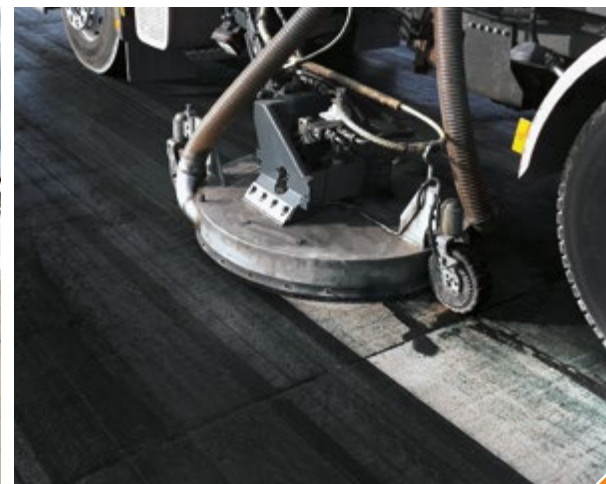


ARC 1000®

AIRPORT RUNWAY CLEANER



The ARC 1000® can be used professionally for rubber removal on runways and demarking applications.

The only system worldwide which can be equipped with an optional sweeping device (2,800 mm sweeping width).



AVERAGE CLEANING RESULTS:

Runway Rubber Removal \emptyset 1,200 m²/h

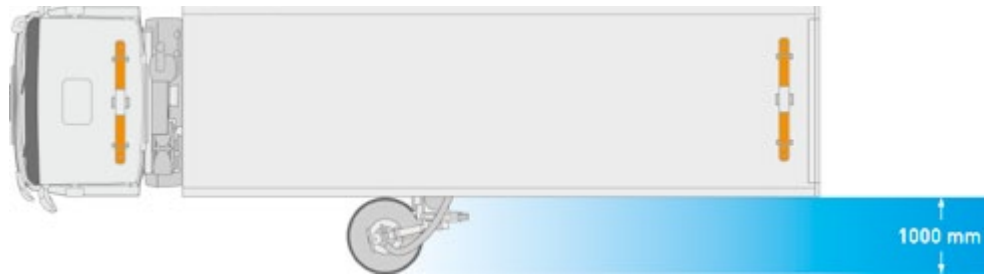
Cleaning of surfaces
(e. g. drainasphalt) \emptyset 3,500 m²/h

Demarking of traffic lines \emptyset 1,800 m/h

TECHNICAL DATA

Controls and settings from driver's cabin

- Monitor for the 2 cameras mounted behind the surface cleaner and the rear side of the truck
- RPM counter for the rotating speed of the surface cleaner
- Pressure gauge for the working pressure
- Joystick for forward and reverse movement
- Potentiometer to set the driving speed during operation
- Setting of the rotation speed of every surface cleaner (rpm)
- Setting of the suction operation (rpm of the blower)
- Setting of the working pressure (1,000 to 2,500 bar)
- Switch for every surface cleaner ON/OFF
- Control for all hydraulic circuits
- Pressure gauge for booster pressure
- Control of water temperature
- Control of water level



Even the expansion joint material has not been destroyed.



The surface cleaner in working position.



The tank and sound hood can be tilted hydraulically for maintenance purposes and for emptying the waste water tank. This allows easy access to all components – high pressure pump, boost pump, fan, cooler and extractor.

TECHNICAL PARAMETERS

CHASSIS

3- (standard), 4-, 5-axle chassis or semi-trailer/tractor version

ULTRA-HIGH-PRESSURE PUMP

140 kW, P max 2,500/3,000 bar
Q max 29 l/min

SPEED DURING OPERATION

3 to 80 m/min, stepless adjustable

MAX. WORKING WIDTH

1,000 mm, (OPTIONAL – additional demarking device on opposite side)

SUCTION / AIR BLOWER

15,000 m³/h, free air flow and - 0.15 bar

ROTATION OF NOZZLES

0-2,500 RPM, stepless adjustable for every cleaning device

TANK VOLUME

13 m³ standard, optional up to 17 m³

The water level in the fresh water tank is continuously monitored. If the level reaches the lower point the driver / operator is warned visually. If the level drops even further the system switches automatically to the pressureless mode avoiding dry running of the high pressure pump.

and 29 l/min at a vehicle speed of 4.8 km/h) water and debris is entirely sucked off the surface and drawn off into the waste water tank.

The ARC 1000® – a further example of our modern technology which more than meets today's demands for environment-friendly, innovative and economical products.

To ensure that the surface being treated is not damaged, the high-pressure system shuts off the moment the driver steps on the clutch or brake. The high-pressure system can only be activated when the vehicles is actually in motion. Even at full load (2,500 or 3,000 bar



Small inaccessible areas can be handled with the hand cleaner MCD 360.